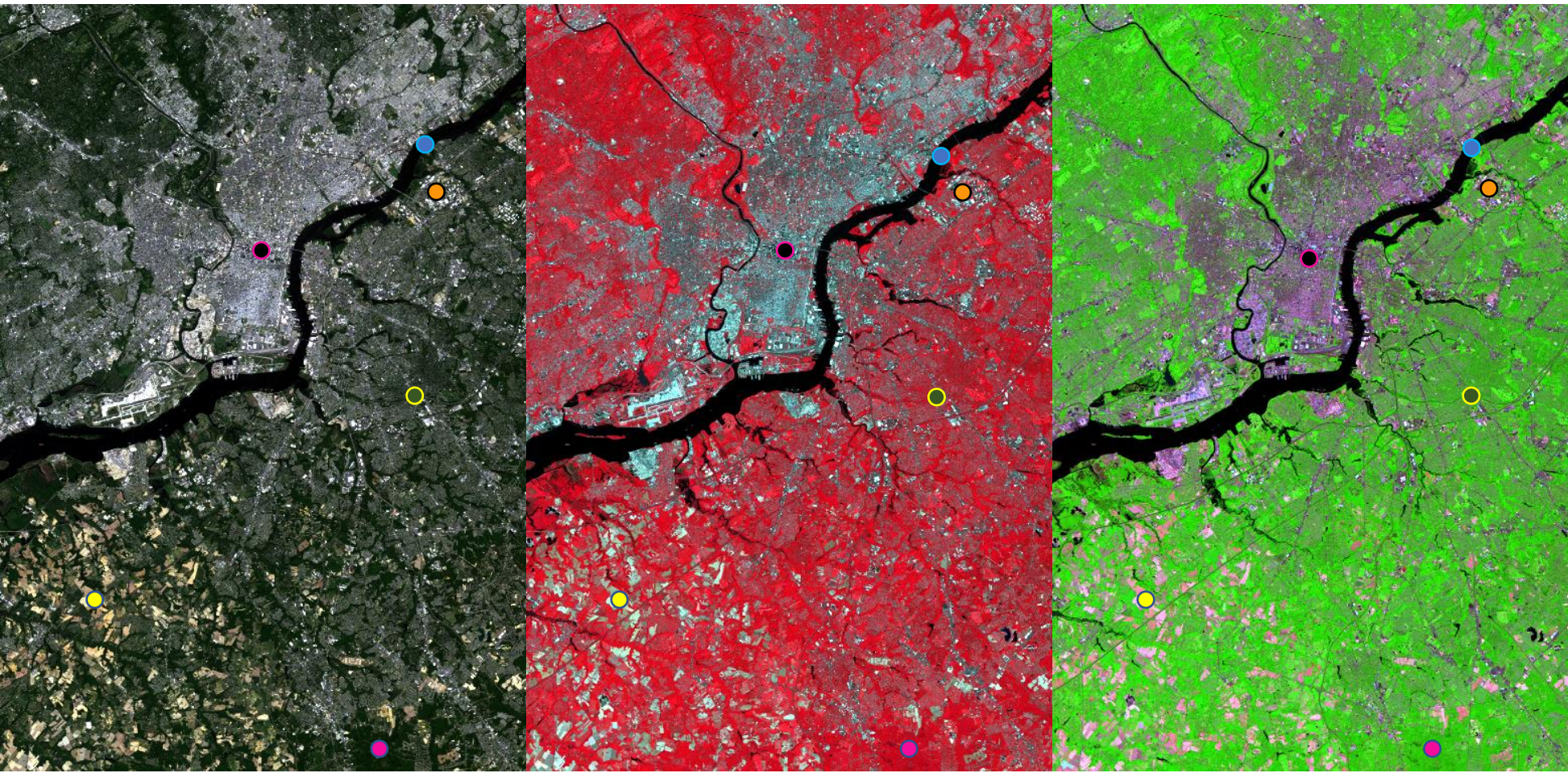


Land Cover Composites, Philadelphia to Glassboro, 2009-05-21



Land cover Type	True Color	False IR	False SWIR
	B G R 1 2 3	G R NIR 2 3 4	R NIR SWIR 3 4 7
Water (Delaware River)	black	black	black
Forest (Glassboro WMA)	dark green	dark red	green
Grass (Tavistock CC)	green	red	lime green
Soil (Pennsauken landfill)	medium brown	light blue	purple
Urban (Center City Philly)	grey	light blue	purple
Your choice (agriculture plot)	beige	light blue-green	pink

Please comment here about your observations regarding sources of distinction (in which different features easily distinguished) and/or sources of conflation (in which things that are different appear similarly)

The most easily distinguished feature by far is water as it appears black across all images and no other features seems to appear as dark as water does. Sources of conflation includes urban and soil landcovers as on the False IR imagery both landcovers appear light blue and in the False SWIR imagery they both appear purple. Additionally on the False IR forest and grass are somewhat similar as they both appear reddish however forested areas are a darker green than the grassy areas. This is also the case with the False SWIR as forest and grass both appear purplish with forest being darker of the two features.