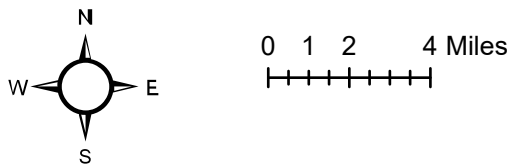
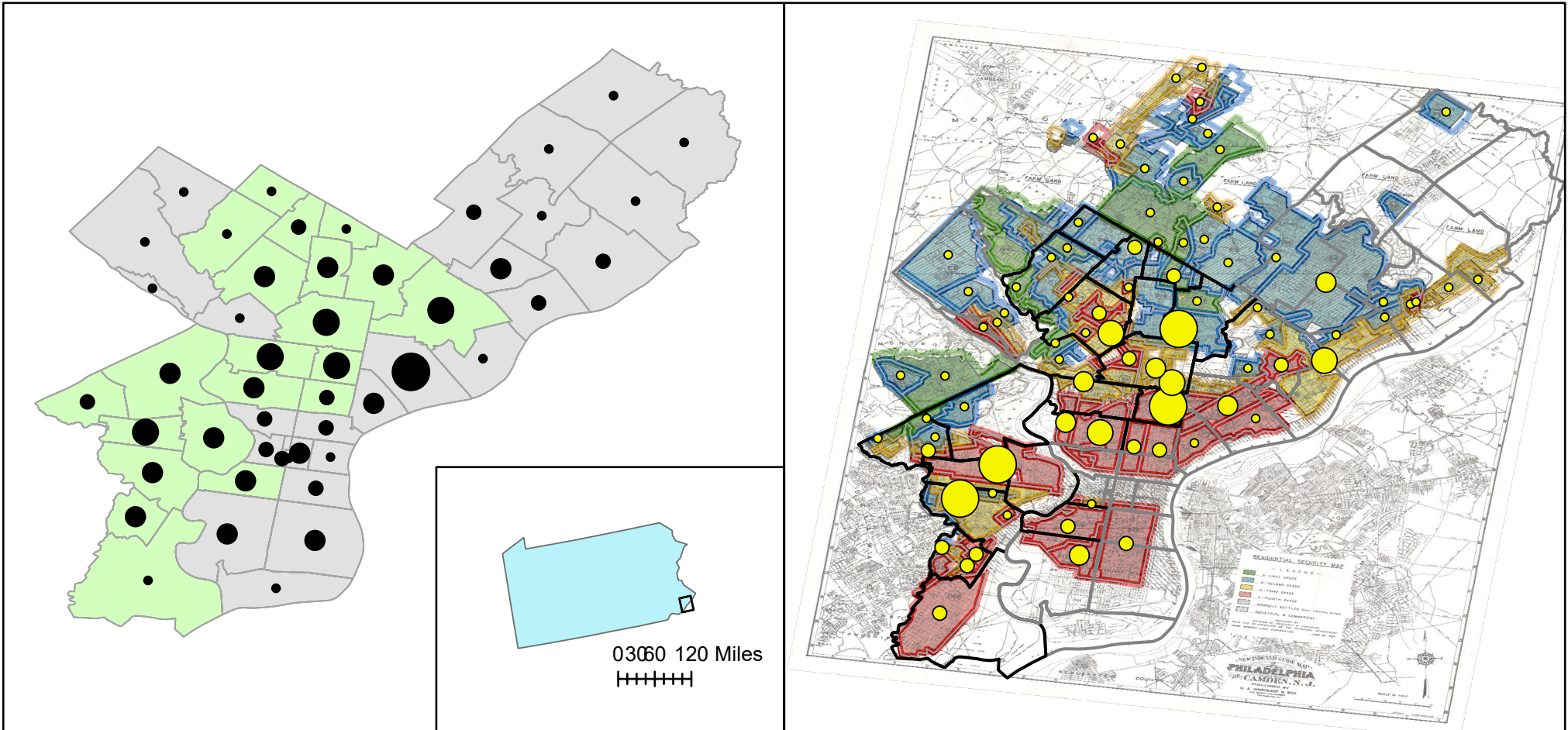


# Impacts of Redlining Practices on Philadelphia Arrests, Homicides, and Demographics



## Arrests

- 22 - 1641
- 1642 - 4464
- 4465 - 9641
- 9642 - 16294
- 16295 - 45684

## Majority Black

- No
- Yes

## Homicides

- 0 - 2
- 3 - 6
- 7 - 14
- 15 - 21
- 22 - 32

## 1937 Redline Grade

- A
- B
- C
- D

## Majority Black

- No
- Yes